

ANNUAL REPORT  
2 0 2 0



BOARD OF DIRECTORS

- Ann Smith, Chair**  
Featherstone Center for the Arts, Oak Bluffs, MA

**John E. Henry, Vice Chair**  
MarlinSpike, LLC, Weston, MA

**Amy Zell Ellsworth, Secretary**  
Belmont, MA

**Carrie Zaslow, Treasurer**  
Providence Revolving Fund, Providence, RI

**Taylor Ho Bynum**  
Dartmouth College, Hanover, NH/New Haven, CT

**Edwige Charlot**  
Artist/Alliance of Artists Communities, Providence, RI

**Iván Espinoza-Madrigal**  
Lawyers for Civil Rights, Boston, MA

**Geoff Hargadon**  
UBS Financial Services, Boston, MA

**Douglas Keith**  
Lincolnshire Advisors, Eliot, ME

**Min Jung Kim**  
New Britain Museum of American Art, New Britain, CT

**Erinn King**  
Payden & Rygel, Boston, MA

**Ginnie Lupi**  
New Hampshire State Council on the Arts, Concord, NH

**Karen Mittelman**  
Vermont Arts Council, Montpelier, VT

**Barbara E. Murphy**  
Burlington, VT

**Chip Newell**  
NewHeight Group, Portland, ME

**Kristina Newman-Scott**  
BRIC, Brooklyn, NY

**Julie Richard**  
Maine Arts Commission, Augusta, ME

**Randall Rosenbaum**  
Rhode Island State Council on the Arts, Providence, RI

- Madeline Sayet**  
(Mohegan)  
Director/Writer/Performer  
New Haven, CT

**Elizabeth Shapiro**  
Office of the Arts, Connecticut  
Department of Economic and Community Development,  
Hartford, CT

**Pamela Tatge**  
Jacob's Pillow Dance,  
Becket, MA

**Ted Wendell**  
Milton, MA

**Marco Werman**  
BBC Worldwide/Public Radio  
International, Boston, MA

**Lisa Wong**  
Arts & Humanities Initiative  
Harvard Medical School,  
Boston, MA

*Thank you to the following outgoing board members for their service: Christal N. Brown, Lawrence J. Simpson*

ADVISORY COUNCIL

- David Howse, Co-Chair**  
ArtsEmerson, Boston, MA

**Liana Krupp, Co-Chair**  
Krupp Family Foundation,  
Boston, MA

**Shoshona Currier**  
Bates Dance Festival,  
Lewiston, ME

**Pamela Diamantis**  
Curbstone Financial  
Management Corp,  
Manchester, NH

**Stephanie Fortunato**  
City of Providence Department  
of Art, Culture + Tourism,  
Providence, RI

**Alyce Lee**  
Boston, MA

**Jacob Padrón**  
Long Wharf Theatre/The Sol  
Project, New Haven, CT

*Thank you to the following outgoing advisory council members for their service: Sandra Burton, Sara Coffey, Molly Davies, Ana Flores, Felicia Knight, Angie Lane, Denise Menton, Frank Mitchell, Anita Walker.*

ACCESSIBILITY COMMITTEE

- Todd Hanson**  
JSA Inc, Portsmouth, NH

**Michael Jordan**  
Adobe, Newton, MA

**Toby MacNutt**  
artist/consultant, Burlington, VT

**Elizabeth Shapiro**  
Office of the Arts, Connecticut  
Department of Economic and Community Development,  
Hartford, CT

STAFF

- Morganna Becker**  
Community Engagement  
Coordinator, Creative Economy

**Kamaria Carrington**  
Program Coordinator, Public Art

**Jug Chokshi**  
Chief Operating Officer

**Rodrigo DelaTorre**  
Finance Manager

**Cathy Edwards**  
Executive Director

**Falyn Elhard**  
Program Associate, New  
England Presenting & Touring

**Steven Fenton**  
Human Resources & Operations  
Director

**Jeffrey Filiault**  
Senior Communications Officer

**Indira Goodwine**  
Program Director, Dance

**Kristin Gregory**  
Program Manager, Dance

- Daniela Jacobson**  
Program Manager, New  
England Presenting & Touring;  
Accessibility Coordinator

**Meena Malik**  
Program Manager, Theater

**Jess Muise**  
Program Administrator,  
Creative Economy

**Cheri Opperman**  
Grants Manager, Dance

**Adrienne Petrillo**  
Senior Program Director, New  
England Presenting & Touring,  
Center Stage

**Jane Preston**  
Deputy Director, Programs

**Dee Schneidman**  
Senior Program Director,  
Research & Creative Economy

**Derek Schwartz**  
Program Coordinator, Theater

**Sarah Silva**  
Development Officer

**Abby Southwell**  
Technology & Data Director

**Kelsey Colcord Spitalny**  
Senior Program Officer, Center  
Stage

**Janusz Sulanowski**  
Finance Associate

**Quita Sullivan, JD**  
(Montaukett/Shinnecock)  
Senior Program Director,  
Theater

**Kim Szeto**  
Program Director, Public Art

**Sharon Timmel**  
Development Director

**Elizabeth Timmerman**  
Technology & Data Coordinator

**Ann Wicks**  
Communications Director

**Annie Yang-Perez**  
Executive Affairs & Special  
Projects Officer

CONTENTS

- 2 Grants & Programs

4 Highlights from 2020

6 Financials

8 Funders & Partners

9 Support NEFA

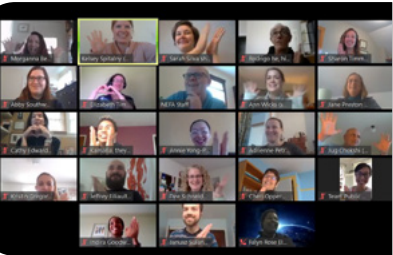
IMAGE CREDITS

- Front cover (l-r):** New England Dance on Tour at Wesleyan Center for the Arts; Su Teatro, Interview With a Mexican, photo by Steven Abeyta; Phantom Limb, BAM, photo by Richard Termine

**Back cover (l-r):** Double Edge Theater, photo by Kim Chin-Gibbons; Teatro Luna West, The Times, photo by Alexandra Meda

**Page 3 (l-r):** New England Dance on Tour at Wesleyan Center for the Arts; Lilly Manycolors Red Dress Lodge, photo by Tess Scheflan

**Page 4 & 5 (l-r):** Ice Dance International at Strawberry Banke, photo by David J Murray; Kinan Azmeh and Dinuk Wijeratne at West Clairmont Center for Music and the Arts, photo by Chris Cheon; A Host of People, Cleopatra Boy, photo by Brian Devers; Clear Creek Creative, photo by Erica Fladeland; Celebration of Leadership, photo by Jeffrey Filiault



**The New England Foundation for the Arts** envisions a nation where artists flourish and communities celebrate art as essential to a thriving, equitable society. We invest in artists and communities and foster equitable access to the arts, enriching the cultural landscape in New England and the nation.

DEAR FRIENDS,

2020 has brought unprecedented challenges, and the long-term reality of COVID-19 and related economic downturn will continue to dramatically affect the creative sector. NEFA's values of equity, diversity, inclusion, and accessibility continue to guide us, because the arts have a vital role in reimagining a more just future. Our 2020 annual report highlights our work, which supports the sector in New England and the nation, and celebrates art as essential to a thriving, equitable society.

NEFA's staff has maintained a passionate commitment to our work while navigating COVID and working from home. Our team has provided critical technical assistance, emergency support, and continuity for our grantees and constituents. NEFA is a field-building organization and a grant-maker, and we've been stepping up with responsive strategies and leadership.

As always, our sincere gratitude goes to our partners at the National Endowment for the Arts and New England's state arts agencies, and all our donors, grantees, and collaborators, whose vision and support make NEFA's work possible. I also want to acknowledge the dedication of the NEFA board of directors, and advisory council, both past and present.

In fiscal year 2020, NEFA:

- Awarded 426 grants totaling over \$3.5 million to artists and cultural organizations in New England and across the nation.**
- Contributed \$285,000 from our Strategic Risk Reserves to support emergency artist relief in New England. With our partners at the state arts agencies in all six New England states, NEFA supported grants of \$500-\$1,000 to over 400 artists.**
- Planned the summer 2020 launch of a New England Arts Resilience Fund, in partnership with The Andrew W. Mellon Foundation, the National Endowment for the Arts, and our fellow Regional Arts Organizations, to support cultural organizations across the country.**

Inside, you will find additional highlights and information on NEFA's programs. We welcome your feedback, value your support, and hope you and your loved ones are healthy.

With appreciation,

*Cathy Edwards*

Cathy Edwards

Executive Director



## GRANTS & PROGRAMS

Our work at NEFA is simple: to cultivate and promote the arts in New England and beyond. Our programs support artists across many forms of expression and many geographies, connecting them with collaborators and communities, fueling creative exchange and public discourse, and strengthening the creative economy.

Each program and project that is brought to life at NEFA builds a stronger and more dynamic infrastructure for the arts. Through grants, convenings, online tools, and research, NEFA continues a 43-year history of pioneering partnerships and programs supporting the arts.

Visit [www.nefa.org](http://www.nefa.org) for more detail on current programs and services, including:

- » **Center Stage<sup>SM</sup>** Bringing vibrant performers from abroad to the U.S. in an international exchange and cultural diplomacy initiative of the U.S. Department of State.
- » **Creative Economy** Highlighting and quantifying the economic impact of the creative sector, including **CreativeGround**, the region's only online directory of cultural organizations, artists, and creative businesses, which showcases and strengthens New England's creative sector.
- » **National Dance Project** Supporting the creation and touring of new dance works and field-building initiatives for dance makers and dance presenters.
- » **National Theater Project** Supporting the development and touring of artist-led, ensemble, and devised theater.
- » **New England Programs** Supporting New England organizations to present performing artists of all disciplines, providing artists with support to create and produce new work, and connecting both to resources and networks.
- » **Public Art** Supporting the field of public art through professional development, networking, and grantmaking through work that engages the public, interacting with communities and public space.

"The [NEFA] staff is invested in our success and have done whatever it takes to bring it about"

George Staib  
staibdance, Atlanta, GA



Deborah Goffe's *Scapegoat Garden* at Wesleyan Center for the Arts, photo by Richard Marinelli

Learn more about NEFA's grant recipients at [www.nefa.org](http://www.nefa.org).



SUPPORT



CONNECT



STRENGTHEN



Powering the Arts

In the wake of the COVID-19 pandemic’s impact on working artists, NEFA’s Board of Directors approved an award of \$285,000 to support emergency artist relief funds to New England artists, in partnership with the state arts agencies in Connecticut, Maine, Massachusetts, New Hampshire, Rhode Island, and Vermont. Grants ranging from \$500-\$1,000 supported over 400 working artists who had lost income. The \$285,000 was drawn from NEFA’s unrestricted Strategic Opportunity & Risk Reserve fund.

“Artists are the core of the cultural ecosystem; this is an essential investment in the health of communities across the region.”

Ann Smith  
NEFA Board Chair

Building Networks

NEFA’s National Theater Project, which promotes the development and touring of artist-led, ensemble, and devised theater works, celebrated its tenth year of support for the field. In addition to funding, NTP animates an informed, interactive network of producing theaters, presenters, and ensembles. Since 2010, NEFA has infused over \$8.59 million into the field. To date, 75 new theater works have reached 43 states across the U.S., reaching large and small arts presenters, military bases, universities, regional theaters, and festivals. NTP has lead funding from The Andrew

W. Mellon Foundation with additional support from the Doris Duke Charitable Foundation.

“The NTP grant has given us the means to think about our project in broader terms and to work with fewer compromises. It has enabled us to provide training for our performers, which in turn helps build the ensemble ethic and collaborative voice.”

Eric Bass  
Sandglass Theater, Vermont

Energizing Communities

On March 5, NEFA gathered arts colleagues and supporters for the Celebration of Leadership, which honored arts leaders and launched artist opportunities. Arts leaders honored were Larry Simpson of Berklee College of Music, who culminated his NEFA board service after 14 years, including six as Chair, and Newell Flather, co-founder of GMA Foundations, who was instrumental in bringing the Fund for the Arts to NEFA in 1981. Artist opportunities included the inaugural Newell Flather Leadership in Public Art awards, awarded to artist Silvia López Chavez and curator Kate Gilbert of Now and There Inc, and the launch of New Work New

England, a grant for New England’s artists to create work to engage the region’s communities.

“A friend once said that being honored was like receiving a long drink of water in the long struggle for lifting the arts and seeking social justice... Tomorrow we return to our tasks with renewed vigor even more committed.”

Larry Simpson  
former NEFA board member and chair  
Celebration of Leadership honoree

# ABOUT NEFA

## SUPPORTING ARTISTS & COMMUNITIES IN NEW ENGLAND AND BEYOND

Founded in 1976, NEFA is one of six regional arts organizations (RAOs) who work in partnership with the National Endowment for the Arts and the state arts agencies to support arts programs on a regional basis. RAOs were created by state arts leaders in partnership with the National Endowment for the Arts and the private sector in order to transcend state boundaries and give the public access to a greater and richer variety of arts experiences.

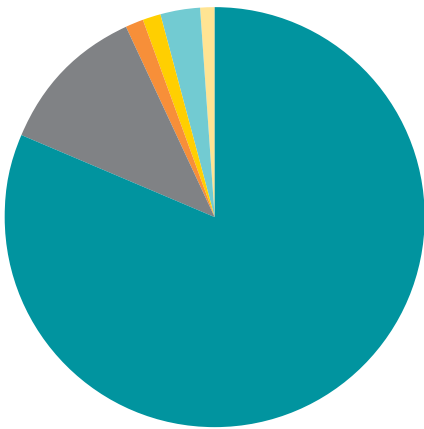
Today, NEFA's programs are regional, national, and international in scope, supporting artists and communities through grants and other resources including workshops, convenings, research, and online tools.



National Dance Project supported-Nichole Canuso Dance, Being WWith

# FINANCIALS

JUNE 1, 2019 – MAY 31, 2020



## REVENUE

Foundations, Corporations, & other Government	81.6%
National Endowment for the Arts	11.8%
State Arts Agencies	1.3%
Individuals	1.3%
Earned income	3.2%
Interest & dividend income	0.9%



## EXPENSE

Grants	63.7%
Program Services	17.7%
Administration	12.5%
Communications & Development	6.1%

# STATEMENT OF FINANCIAL POSITION

ASSETS	
Cash	8,479,957
Contributions, grants, and other receivables	6,499,292
Investments, short-term and long-term	10,511,869
Fixed assets	140,826
Other assets	62,533
<b>Total assets</b>	<b>25,694,477</b>

**TOTAL ASSETS** 25,694,477

LIABILITIES	
Accounts payable and accrued expenses	709,799
Grants payable	3,869,386
Loans payable	334,500
Fiscal agent payable	59,809
<b>Total liabilities</b>	<b>4,973,494</b>

NET ASSETS	
Unrestricted	1,872,246
Board designated—strategic opportunity and risk reserve	482,207
Board designated—funds functioning as endowment	4,683,679
Temporarily restricted	13,682,851
<b>Total net assets</b>	<b>20,720,983</b>

**TOTAL LIABILITIES AND NET ASSETS** 25,694,477

# OPERATING STATEMENT

REVENUE & SUPPORT	
Contributions and grants	8,172,463
Service fees and other income	269,579
Interest and dividends	72,384

**TOTAL REVENUE AND SUPPORT** 8,514,426

EXPENSES	
<b>PROGRAM EXPENSES</b>	
Grants and related services	5,385,513
Program services	1,498,268
<b>Total program expenses</b>	<b>6,883,781</b>

<b>ADMINISTRATIVE EXPENSES</b>	
Administrative and general	1,058,008
Communications and development	512,925
<b>Total administrative expenses</b>	<b>1,570,933</b>

**TOTAL EXPENSES** 8,454,714

**NET OPERATING SURPLUS/(DEFICIT)** 59,712

The numbers presented in this report were unaudited at the time of printing. A complete set of audited financials is available on our website or upon request from Sharon Timmel, Development Director, [stimmel@nefa.org](mailto:stimmel@nefa.org), 617.951.0010 x511.

For the most current list of funders and partners, visit [nefa.org](http://nefa.org).



# THANK YOU

From June 2019 through May 2020, NEFA has been generously supported by the following:



## KEY

- Represents full amount of multi-year grant(s)
- ◆ Member of the Celebration of Leadership Host Committee
- Includes a donation to New Work New England
- ▲ Includes a donation to the Rebecca Blunk Fund
- + Includes a donation to Covid-19 Artist Relief

## \$2,000,000 +

The Andrew W. Mellon Foundation •  
Barr Foundation •  
Doris Duke Charitable Foundation •

## \$1,000,000 +

National Endowment or the Arts  
U.S. Department of State's Bureau of Educational and Cultural Affairs •

## \$100,000 +

Anonymous  
The Boston Foundation •  
Doris Duke Foundation for Islamic Art •

## \$50,000 +

Massachusetts Cultural Council  
Seedlings Foundation •

## \$25,000 +

Aliad Fund at The Boston Foundation •  
Ted and Mary Wendell ◆+

## \$10,000 +

Connecticut Department of Economic and Community Development  
John and Mary-Beth Henry ◆  
Rhode Island State Council on the Arts  
Larry and Ann Simpson  
Vermont Arts Council

## \$5,000 +

Berklee College of Music  
Lee and Amy Zell Ellsworth ◆  
Estate of Samuel A. Miller ▲  
Hildreth Stewart Charitable Foundation  
Erinn King  
Maine Arts Commission  
Marcie Hershman ◆▲

## \$2,500 +

Iván Espinoza-Madrigal and Seth Riseman ◆+  
Newell Flather ■▲  
Geoff Hargadon & Patricia La Valley ◆  
Liana Krupp  
The Menton Family Fund  
New Hampshire State Council on the Arts  
Payden & Rygel  
The James E. Robison Foundation  
Andrea B. Rogers ▲  
The Michael and Janet Rogers Foundation

## \$1,000 +

Geeta Aiyer ◆  
Dr. Charles F. Desmond ◆  
EagleClaw Capital Management  
Eastern Bank Charitable Foundation  
Cathy Edwards and Mike Wishnie ◆▲  
Min Jung Kim +  
Demond Martin ■  
Barbara Murphy ◆+  
The Theodore Edson Parker Foundation  
John Plukas  
Dr. William U. and Jencie Shipley ◆  
Tyra B. Sidberry ◆+  
Ann Smith ◆  
David C. Snyder and Sara E. Coffey ◆  
Lisa Wong and Lynn Chang ◆

## \$500 +

Adobe Systems Inc.  
Anonymous  
Baystate Financial  
David and Kathy Clem ■  
Joseph Downing ■  
Eckert Seamans  
Lee Ellenberg & Ken Mitchell ▲  
Kitty Flather ■  
Robert and Bettye Freeman ◆  
Alyce Lee  
Mr. and Mrs. Aaron Miller ▲  
Virginia and Timothy Millhiser  
Laura Paul and Paul Messier ▲

Chip Newell and Susan Morris ◆  
Kristina Newman-Scott ◆  
Jane Preston and Michael Muller ▲  
The Raffiani Family Foundation  
Alan and Joan Reische ◆  
Pamela Tatge and Jerry Zinser ◆▲  
UBS Financial Services  
Marco Werman

## \$250+

Alexander Aldrich  
Alan and Saralynn Allaire  
Anonymous +  
Anonymous  
James and Senani Babson ■  
Ruth Blodgett, Liz Blodgett, Amy Blodgett, and Ward Blodgett ◆  
Christal Brown ▲  
Joyce Collier and Jennifer Potter ▲  
Andrew P. Cornell ◆  
Pamela Diamantis  
In honor of Amy Ellsworth  
Alice Flather Blodgett ◆  
Ann Fowler Wallace  
Diane S. Gallagher ◆  
Gay & Lesbian Fund of Vermont, at the direction of the Shayne Foundation  
David & Charisse Howse ◆  
Jane James ■  
Mark Jensen  
Steven Joncas ■  
Michael Jordan  
Mary Kelley and Tom Field ◆  
Jeremy and Margie Klein Ronkin  
Michele Long and Margaret Keenan ▲  
Ellen and Chris Lovell  
Anne B. Miller +  
Karen Mittelman  
Cheri Opperman and Maure Aronson ▲  
Anthony and Creelea Pangaro ■  
Mary Phillips ◆  
Randall Rosenbaum  
Eva Rosenberg ■  
Larry Rosenberg  
Douglas Sanders  
Linda Shelton ▲  
Shipman & Goodwin LLP  
George Waterman ◆

Steve Weiner and Don Cornuet  
Carrie Zaslow and Peter Quattromani ◆

## UP TO \$249

Jonathan Abbott and Shari Malyn  
AmazonSmile  
Stephanie Ancona ▲  
Anonymous ▲  
Anonymous  
Anonymous  
Cathy Arden ▲  
Daniel Arsem-O'Malley ▲  
Bill August  
Bank of America Charitable Foundation ■  
Gunard Bergman  
Patricia Blunk Justice ▲  
Sara Bogosian ■  
Meri Bond ▲  
Bill and Ruth Botzow ▲  
Katherine Breen ■  
Paul Broder and Susan Wieczorek  
Dr. Roger C. and Carol Durgy Brooks  
Rebecca Bruyn and Cindy Rosenbaum ▲  
Taylor Ho Bynum  
Dr. Louis and Brenda Caplan ▲  
Michael and Kimberly Cayer  
Byron and Susan Champlin  
Jug Chokshi and Sarah Holden Chokshi  
Ray Considine ■  
Lisa Crowley  
Carolyn Deuel  
Gregory Downes ■  
Mary Christine Dwyer ■  
Brenda Eckert  
Claudia Edwards & David J. Levin  
Mary-Ellen Efferen ■  
Michelle Farley  
Laurel Farnsworth ■  
Judith and Robert Ferguson  
Roger Flather ■  
Ana Flores  
Jennifer Fonseca  
Stephanie P. Fortunato ■  
Ralph B. Freidin ▲  
JG ▲  
Bruce Gertz ■  
Denise Grudzinski  
Todd Gordon and Susan Feder ▲

Charles Flather ■  
Phyllis Hershman ▲  
Melissa Howe ■  
Cheryl Ikemiya ▲  
Sachiko Isihara ■  
Douglas and Toni-Marie Keith  
Deborah Kelley  
Teresa Kelly  
Mike King ■  
Sharon Kramer ■  
Angie Lane  
Margaret Lawrence ▲  
Peter Lee  
Todd Lee ■  
Karen and Jim LeFevre  
Tim Leland and Julie Hatfield-Leland ■  
Anita Sue Lichtblau ■  
Lincoln Financial Foundation  
Renny and Jean Little ■  
Payal Loungani ■  
Ginnie Lupi  
Patricia Manion  
Cassandra Mason  
Abigail and Sancho Maulion ▲  
Steve McCormack  
Karole Mendelsohn  
Frank Mitchell  
Deborah Monosson  
Cynthia Murray-Beliveau  
Max Nibert  
Matthew and Susan Nicholl ■  
Benjamin Opara ■  
The O-Tones  
Dane Ouellette  
Jacob Padrón  
K.M. Peterson ▲  
Tony Pietricola  
Meg Pond and Jim Rader  
Lisa Reindorf +  
Julie Richard  
Robert A. Richter  
Peter and Elizabeth Robbie  
Harper M. Roberts  
Larry Rubinstein  
Kirirath Saing ■  
Nancy Schon ■  
Nancy Selvage  
Elizabeth Shapiro ▲  
William Shock  
Sarah and Jon Silva ■  
David Slatery +  
Gayle Smalley and Judith Curby ■  
Judith Souweine  
Quita and Mark Sullivan ▲  
Rosemary Thomsen ■

Romalyn Tilghman ▲  
Sharon and Chris Timmel  
Allie Trainor ■  
Martin Wechsler and David Fanger ▲  
Phyllis S. Wishnie  
Lani Wolfe

## GIFTS IN KIND

Pia Agrawal  
Asana  
Four Seasons Hotel  
Salesforce  
Struck Catering

# SUPPORT NEFA

NEFA is a nonprofit 501(c)(3) working in partnership with the National Endowment for the Arts and the six state arts agencies of New England. Additional funding from individual donors, and from public and private institutions, is critically important to realizing our mission.

To make a gift or to learn more about NEFA's work, please visit us at [nefa.org/donate](http://nefa.org/donate), or call Sharon Timmel at 617.951.0010 x511.



Sandglass Theater, Babylon, photo by Kiqe Bosch



NEFA invests in artists and communities and fosters equitable access to the arts, enriching the cultural landscape in New England and the nation. NEFA accomplishes this by granting funds to artists and cultural organizations; connecting them to each other and their audiences; and analyzing their economic contributions. NEFA serves as a regional partner for the National Endowment for the Arts, New England's state arts agencies, and private foundations.

1000 Washington Street, Second Floor  
Boston, MA 02118  
*Traditional lands of the Massachuset  
and the Wampanoag Peoples*

[www.nefa.org](http://www.nefa.org)