



NEW ENGLAND FOUNDATION FOR THE ARTS

NATIONAL DANCE PROJECT

AUGUST 2013



LEAD FUNDERS

Doris Duke Charitable Foundation
The Andrew W. Mellon Foundation

ADDITIONAL FUNDERS

MetLife Foundation
National Endowment for the Arts
Cultural Services of
the French Embassy
French American Cultural Exchange

NEFA is a nonprofit organization that operates with funding from the National Endowment for the Arts, the New England state arts agencies, and from corporations, foundations, and individuals.

To learn how you can support NEFA, visit nefa.org.

NEFA'S NATIONAL DANCE PROJECT (NDP) WAS LAUNCHED IN 1996 to support the creation and touring of new dance works throughout the United States. Since its inception, the program has distributed more than \$25 million in funding to support the dance field in ways that enhance partnerships between artists and presenters with the equally important goals of engaging and expanding audiences for dance.

NDP provides a dynamic system of support that spurs the creation of new dance works and enables audiences in communities across the nation to experience the work of the most compelling dance artists of our time. Beyond grantmaking for creation and touring, the program also works through various initiatives to nurture a vibrant ecology for dance. Currently these emphasize production residencies, international exchange, regional development of dance artists, and the work of contemporary art centers with a focus on performing arts and collaborations across disciplines.

The landscape for dance continues to rapidly change due to significant shifts in the ways that dance work is created and toured, diverse expectations that audiences bring to performances, the impact of technological innovation, and the fluctuating global economy. In response, NDP's programs are evolving. Informed by ongoing program evaluation in partnership with our funders and the artists and presenters we serve, NDP continues to support the field with a commitment to relevance, sustainability, and impact.

For more on NDP's history, grantmaking programs, initiatives, and grant recipients, visit nefa.org.

PHOTOS OF NDP GRANT RECIPIENTS
COVER (CLOCKWISE FROM TOP LEFT):
BRIAN BROOKS MOVING COMPANY | PHOTO: GRANT HALVERSON/ADF
BEBE MILLER COMPANY | PHOTO: TIM RUMMELHOFF
TRISHA BROWN DANCE COMPANY | PHOTO: STEPHANIE BERGER

INSIDE FRONT COVER:
KAREN SHERMAN | PHOTO: KAREN SHERMAN

BACK:
HUBBARD STREET DANCE CHICAGO AND ALONZO KING
LINES BALLET | PHOTO: AMBER BLISS

This publication features projects currently eligible for NDP touring support. U.S. nonprofit organizations presenting supported projects between June 1, 2014 and August 31, 2015 may join a project's NDP tour and apply for funds to subsidize up to 50% of the artist fee and travel expenses. Interested organizations should contact the listed tour coordinators in advance of the March 10, 2014 tour plan deadline to discuss receiving funding through NDP's Presentation Grant process (see page 13 for more information).

CONTENTS

2 NDP PARTNERS

3 NDP TOURING AWARDS

- 3 Ballet Memphis
BodyCartography Project
BODYTRAFFIC
- 4 Camille A. Brown & Dancers
Carmen de Lavallade
Gametophyte Inc.
- 5 Kyle Abraham/Abraham.In.Motion
Lar Lubovitch Dance Company
Liz Lerman
- 6 Luciana achugar
Lucky Plush Productions
Martha Graham Contemporary Dance
- 7 Mathew Janczewski's ARENA DANCES
Michelle Ellsworth
Pat Graney Company
- 8 Ralph Lemon/Cross Performance
Ragamala Dance
Robert Moses' Kin
- 9 Rosy Simas Danse
Sarah Michelson
Sean Dorsey Dance
- 10 Soledad Barrio & Noche Flamenca
Voloshky Ukrainian Dance Ensemble

11 VIDEO SAMPLES

12 NDP FUNDING OPPORTUNITIES

CONTACT

SARA C. NASH

PROGRAM MANAGER, NDP
617.951.0010 X512
SNASH@NEFA.ORG

ELIZABETH EPSSEN

PROGRAM COORDINATOR, NDP
617.951.0010 X521
EEPSSEN@NEFA.ORG

CHERI OPPERMAN

GRANTS COORDINATOR, NDP
617.951.0010 X524
COPPERMAN@NEFA.ORG

JANE PRESTON

DIRECTOR OF PROGRAMS

REBECCA BLUNK

EXECUTIVE DIRECTOR

NDP PARTNERS

(as of August 2013)

NDP is guided by a rotating group of partners who represent presenters, artists, and organizational leaders from the dance field. They have extensive knowledge of the dance community and are instrumental in developing new dance works and audiences within their communities. NDP partners make funding recommendations and provide critical feedback on program development and policy. Selection of NDP partners takes into account geography, gender, and cultural and racial equity, and includes new and established leaders in the field. For the most current list, visit nefa.org.

Erin Boberg Doughton

Performing Arts Program Director
Portland Institute for Contemporary Art

Paul Brohan

Director of Artistic Initiatives
Clarice Smith Performing Arts Center
University of Maryland

Yolanda Cesta Cursach

Associate Director of Performance Programs
Museum of Contemporary Art

Laura Faure

Director
Bates Dance Festival

Colleen Furukawa

Vice President - Programming
Maui Arts & Cultural Center

Mary Luft

Executive Director/Founder
Tigertail Productions

George Lugg

Associate Director
REDCAT (Roy and Edna Disney/CalArts Theater)

Adele Myers

Artistic Director
Adele Myers and Dancers

David Ravel

Director
Alverno Presents

Michael Reed

Senior Director - Programs & Organizational Initiatives
Arizona State University Gammage

Andrea Rogers

Executive Director Emerita
Flynn Center for the Performing Arts

Janera Solomon

Executive Director
Kelly Strayhorn Theater

David Thomson

Dancer/Choreographer

Sixto Wagan

Director, Center for Arts Leadership
University of Houston

Martin Wechsler

Director of Programming
The Joyce Theater

Marya Wethers

International Project Director, Suitcase Fund
New York Live Arts

Sam Miller (Founder & Honorary Advisor)

President
Lower Manhattan Cultural Council

BALLET MEMPHIS

Memphis, TN
www.balletmemphis.org

**New Work by Julia Adam**

As part of Ballet Memphis' *The River Project*, choreographer Julia Adam takes inspiration from the fruiting bodies of mushrooms, the psychedelic mushroom, and the mystical fungi worlds of the elfin kingdom and dancing fairy rings to create a new 25-minute ballet. Adam's work tours with other repertory works thematically tied to the history, nature, and culture of the Mississippi River. Additional tour offerings include green symposiums, extensive outreach, and a Delta photo exhibit.

TOUR COORDINATOR

Laura Colby, Director
Elsie Management
laurac@elsieman.org
tel 718.797.4577
www.elsieman.org

ARTIST FEE

\$19,000/performance
\$30,000/week
(Plus housing)

TOURING AVAILABILITY

November 2013–December 2015

TECH NEEDS

Sprung floor; black and white marley; prior day load-in; 2 projectors.

PRESENTER PARTNERS

Performing Arts Society of Acadiana
(Lafayette, LA)
White Bird (Portland, OR)

PHOTO: ARI DENISON

BODYCARTOGRAPHY PROJECT

Minneapolis, MN
www.bodycartography.org

**Super Nature**

Full of artifice and animal appetites, *Super Nature* engages the wild, the domestic, and the civilized aspects of human nature to create a radical ecological melodrama. Devised as either a stage performance or a one-on-one performance installation for a gallery, this project from the BodyCartography Project invites an audience's visceral and empathetic engagement. An immersive sound score composed by Zeena Parkins amplifies the performance of seven extraordinary dancers and local performers.

TOUR COORDINATOR

Olive Bieringa, Co-Director
BodyCartography Project
olive@bodycartography.org
tel 917.463.9300

ARTIST FEE

Performance: \$20,000–\$25,000/week
Installation (with or without performance):
\$950/day (3 day minimum)
(Plus housing and travel)

TOURING AVAILABILITY

June 2014–August 2015

TECH NEEDS

Contact tour coordinator for details.

PRESENTER PARTNERS

Walker Art Center (Minneapolis, MN)
PADL West (San Diego, CA)
Performance Space 122 (New York, NY)

2012 NDP recipient available to tour in the 2014–2015 season.

PHOTO: COURTESY OF WALKER ART CENTER

BODYTRAFFIC

Los Angeles, CA
www.bodytraffic.com

**New Work by Victor Quijada**

Victor Quijada (Director/Choreographer of RUBBERBANDance) creates an original work for BODYTRAFFIC, a Los Angeles-based repertory company that relentlessly recruits great talent from around the globe to create world-class contemporary dance. The new work for six BODYTRAFFIC dancers explores and highlights Mr. Quijada's unprecedented movement vocabulary that seamlessly weaves together the street dance styles he grew up with in Los Angeles and the classical forms of his impressive performance career. This collaboration between choreographer and company is sure to be cutting-edge while accessible to all audiences.

TOUR COORDINATOR

Tina Berkett, Co-Artistic Director
BODYTRAFFIC
tina@bodytraffic.com
tel 646.221.7811

ARTIST FEE

\$16,000/performance
\$32,000/week

TOURING AVAILABILITY

June 2014–June 2019

TECH NEEDS

Contact tour coordinator for details.

PRESENTER PARTNER

The Joyce Theater (New York, NY)

PHOTO: CHRISTOPHER DUGGAN

CAMILLE A. BROWN & DANCERS

Jamaica, NY
www.camilleabrown.org

**Black Girl**

Camille A. Brown, in collaboration with dramaturg Kamilah Forbes and a team of musicians and designers, creates and celebrates *Black Girl*, a new multimedia work that depicts the joys and complexities of carving out a positive identity as a young, Black female in urban American culture. Inspired by Toni Morrison's book *The Bluest Eye* and imagery from *Alice in Wonderland*, the work seeks to inspire dialogue about the nuanced prejudices that can exist within communities and to challenge the contemporary notions of Eurocentric beauty.

TOUR COORDINATOR

Pamela Green, Agent
pamart@aol.com
 tel 919.813.6092
www.pmgartsmgt.com

ARTIST FEE

\$23,000/performance
 \$42,000/week
 (Plus housing and local transportation)

TOURING AVAILABILITY

February 2015–December 2015

TECH NEEDS

Contact tour coordinator for details.

PRESENTER PARTNERS

Dance Cleveland (Cleveland, OH)
 The Joyce Theater (New York, NY)

PHOTO: CHRISTOPHER DUGGAN

CARMEN DE LAVALLADE

New York, NY

**As I Remember It**

As I Remember It is an intimate portrait of the legendary artist Carmen de Lavallade told through dance, film, and her personal writings. Created by Ms. De Lavallade in collaboration with director Joe Grifasi and co-writer/dramaturg Talvin Wilks, this hour-long original work will be both a retrospective of a career that spans more than six decades and an exploration of movement for an older artist. The evening is, in essence, a living memoir with Carmen de Lavallade dancing through her life history.

TOUR COORDINATOR

Anna Glass Coquillot, Creative Producer
glass.coquillot@gmail.com
 tel 646.418.3762

ARTIST FEE

\$19,500/performance
 \$33,000/week

TOURING AVAILABILITY

June 2014–July 2015

TECH NEEDS

Video projection required. Contact tour coordinator for details.

PRESENTER PARTNERS

651 ARTS (Brooklyn, NY)
 Jacob's Pillow Dance Festival (Becket, MA)
 John F. Kennedy Center for the Performing Arts (Washington, DC)

PHOTO: JULIETA CERVANTES

GAMETOPHYTE INC.

Brooklyn, NY
www.gametophyte.org

**johnbrown**

johnbrown, a new performance project by Dean Moss with visual artist Laylah Ali, meditates on the controversial white abolitionist John Brown, integrating a deep interest in the history of the man with more recent familial reflections on the struggle for civil rights. The work is framed through the lens of inexperienced teenaged participants and offers a complexly layered generational perspective on the legacy of this radical activist. *johnbrown* will premiere in October 2014, coinciding with the 150th anniversary of the 13th Amendment, America's abolishment of slavery.

TOUR COORDINATOR

Dean Moss, Director
 Gametophyte Inc.
moss@gametophyte.org
 tel 347.244.1615
www.gametophyte.org

ARTIST FEE

\$22,000/performance
 \$28,000/week
 (Plus housing and travel)

TOURING AVAILABILITY

January 2015–December 2015

TECH NEEDS

Contact tour coordinator for details.

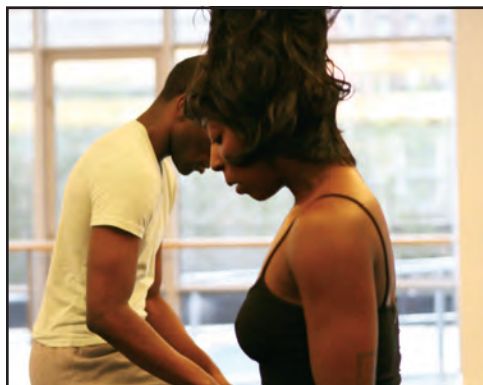
PRESENTER PARTNERS

The Kitchen (New York, NY)
 Kelly Strayhorn Theater (Pittsburgh, PA)
 Wesleyan University (Middletown, CT)

PHOTO: TIM TRUMBLE/ASU

KYLE ABRAHAM/ABRAHAM.IN.MOTION

New York, NY
www.abrahaminmotion.com

**When the Wolves Came In**

Commissioned by New York Live Arts, Kyle Abraham/Abraham.In.Motion creates a new evening-length historical homage celebrating two important milestones—the 150th anniversary of the Emancipation Proclamation and the 20th anniversary of the abolishment of Apartheid in South Africa. These events are jumping-off points for collaborations between Abraham, visual artist Glenn Ligon, and world-renowned musicians, with added inspiration coming from *We Insist: Max Roach's Freedom Now Suite*, a protest album that shed light on the growing civil rights movements of its period.

TOUR COORDINATOR

Sophie Myrtil-McCourtly,
Director of Booking/Representation
Pentacle
sophiem@pentacle.org
tel 212.278.8111 x313
www.pentacle.org/kyleabraham

ARTIST FEE

\$20,000–\$25,000/performance
\$30,000–\$35,000/week
(Plus housing and local transportation;
additional fees for live music)

TOURING AVAILABILITY

October 2014–June 2015

TECH NEEDS

Contact tour coordinator for details.

PRESENTER PARTNERS

New York Live Arts (New York, NY)
On the Boards (Seattle, WA)
Yerba Buena Center for the Arts
(San Francisco, CA)

PHOTO: STEVEN SCHREIBER

LAR LUBOVITCH DANCE COMPANY

New York, NY
www.lubovitch.org

**New Work by Lar Lubovitch**

In a new dance, veteran choreographer Lar Lubovitch pushes aesthetic boundaries, responding to the sonic richness and emotional rawness of a commissioned score by Paola Prestini. The artists' collaborative relationship takes its next step as Lubovitch expands his movement choices, juxtaposing less structured, less lyrical, and more seemingly improvised movement with narrative elements. The new work premieres in 2014 with live music by Le Train Bleu conducted by Ransom Wilson and can tour with live or recorded music.

TOUR COORDINATOR

Rena Shagan, President
Rena Shagan Associates
rena@shaganarts.com
tel 212.873.9700
www.shaganarts.com

ARTIST FEE

\$30,000–\$35,000/performance
\$81,000/week

TOURING AVAILABILITY

January 2015–December 2016

TECH NEEDS

Minimum 36' x 30' stage plus additional
space for lighting & crossover; lighting
prehang and prior day load-in.

PRESENTER PARTNERS

George Mason University (Fairfax, VA)
University of California Santa Barbara
(Santa Barbara, CA)
TITAS (Dallas, TX)

PHOTO: JILL STEINBERG

LIZ LERMAN

Baltimore, MD
www.lizlerman.com

**Healing Wars**

A new work by Liz Lerman with designers Kate Freer, David Reynoso, and Darron West, and featuring actor Bill Pullman with a professional ensemble, *Healing Wars* examines our Civil War and the wars in Iraq and Afghanistan through the eyes of involved healers. A multi-site development process took Lerman from the Harvard archives to head-trauma research labs to Gettysburg and involved partners in medicine, academia, and veterans' communities. *Healing Wars* premieres at Arena Stage as part of its 2013-14 subscription series. Longer residencies preferred for maximum impact.

TOUR COORDINATOR

Amelia Cox, Projects Manager
Liz Lerman LLC
amelia@lizlerman.com
tel 410.961.8809

ARTIST FEE

\$55,000–\$70,000/week

TOURING AVAILABILITY

September 2014–June 2015

TECH NEEDS

Fly house; sprung floor; multiple projectors;
access to installation space; contact tour
coordinator for details.

PRESENTER PARTNERS

Peak Performances, Montclair State
University (Montclair, NJ)
American Repertory Theater
(Cambridge, MA)
Hancher Performances, University of Iowa
(Iowa City, IA)

PHOTO: HELEN SHARIATMADARI

LUCIANA ACHUGAR

Brooklyn, NY
www.lachugar.org

**OTRO TEATRO**

OTRO TEATRO is an evening-length dance that takes place metaphorically in the ruins of a collapsed theater. Through ritualized movement and singing, achugar and her collaborators rebuild another kind of theater, using dance as a ritual of becoming and an occasion for communion with the audience. *OTRO TEATRO* (another/other theater), as in all of achugar's work, aims to move the audience toward a visceral understanding of dance.

TOUR COORDINATOR

Meredith Boggia, Manager
meredith.boggia@gmail.com
tel 518.791.0376

ARTIST FEE

\$17,000/performance
\$24,000/week

TOURING AVAILABILITY

April 2014–December 2016

TECH NEEDS

Contact tour coordinator for details.

PRESENTER PARTNERS

Walker Art Center (Minneapolis, MN)
New York Live Arts (New York, NY)

PHOTO: GENE PITTMAN (COURTESY OF WALKER ART CENTER)

LUCKY PLUSH PRODUCTIONS

Riverside, IL
www.luckyplush.com

**The Queue**

Co-created by Julia Rhoads and theater director Leslie Danzig, *The Queue* is an 80-minute dance-theater work set in a fictional airport, clashing early 20th century choreography/texts (slapstick, vaudeville, short plays) with the distinctly non-theatrical context of waiting. *The Queue* playfully stages private dramas slipping into public spectacle as plots unfold and characters become embroiled in each other's lives. The work's diverse cast and stylistic collisions critique historical and contemporary assumptions about status, humor, and violence.

TOUR COORDINATOR

Laura Colby, Director
Elsie Management
laurac@elsiemanager.org
tel 718.797.4577
www.elsiemanager.org

ARTIST FEE

\$18,000/performance
\$28,000/week
(Plus housing)

TOURING AVAILABILITY

September 2014–August 2015

TECH NEEDS

Sprung floor; marley; prior day load-in; mics for all performers; recorded music available.

PRESENTER PARTNERS

Links Hall (Chicago, IL)
Out North Contemporary Art House
(Anchorage, AK)
Flynn Center for the Performing Arts
(Burlington, VT)

PHOTO: BENJAMIN WARDELL

**MARTHA GRAHAM
CONTEMPORARY DANCE**

New York, NY
www.marthagraham.org

**New Work by Andonis Foniadakis**

Choreographer Andonis Foniadakis, best known for his innovative work with contemporary European ballet companies, collaborates with composer Julien Tarride, lighting designer Clifton Taylor, and costume designer Tassos Sofroniou to create a major new work for Martha Graham Contemporary Dance as part of its Myth and Transformation project. Performed with works by Martha Graham and other contemporary choreographers, the Myth and Transformation project explores how artists transform iconic stories to make contemporary statements.

TOUR COORDINATOR

Rena Shagan, Director
Rena Shagan Associates
rena@shaganarts.com
tel 212.873.9700
www.shaganarts.com

ARTIST FEE

\$30,000/performance
\$100,000/week
(Additional fees for live music)

TOURING AVAILABILITY

March 2014–June 2015

TECH NEEDS

Contact tour coordinator for details.

PRESENTER PARTNERS

Valley Performing Arts Center
(Northridge, CA)
Carolina Performing Arts (Chapel Hill, NC)
Brooklyn College (Brooklyn, NY)

PHOTO: SINRU KU

**MATHEW JANCZEWSKI'S
ARENA DANCES**

Minneapolis, MN
www.arena-dances.org



The Main Street Project

The Main Street Project is a full-length performance that moves between physical and digital space to explore how technology alters our personal connections and changes the face of small town America. Within the piece, electro/techno/pop music combines with folk-inspired songs to illuminate themes of isolation and belonging, and filmed interviews with everyday people from multiple communities bridge the gap between today and yesterday. *The Main Street Project* combines explosive movement with intimate narrative to ask the question, "Does Main Street still exist?"

TOUR COORDINATOR

Mathew Janczewski,
Executive Artistic Director
Mathew Janczewski's ARENA DANCES
arenadances@gmail.com
tel 612.804.0238

ARTIST FEE

\$12,000-\$15,000/performance
\$15,000-\$21,000/week

TOURING AVAILABILITY

June 2014–August 2015

TECH NEEDS

Contact tour coordinator for details.

PRESENTER PARTNERS

College of St. Benedict/St. John's
University (St. Joseph, MN)
Cowles Center for Dance and the
Performing Arts (Minneapolis, MN)

2012 NDP recipient available to tour in the 2014-2015 season.

PHOTO: COURTESY OF ARMOUR PHOTOGRAPHY

MICHELLE ELLSWORTH

Boulder, CO
www.michelleellsworth.com



Clytigation: State of Exception

Irreverently infiltrating the human condition, *Clytigation: State of Exception* is a performance piece and mobile device app that collides Aeschylus' *Oresteia* with dance, the internet, live video processing, and an aerial drone. On a modular mini sound stage, Michelle Ellsworth and video artist Max Bernstein create multiple alternate choreographies and realities for an omnipotent surveillance gathering quad-copter. Using an ancient text and modern technology, this timely work investigates the impact of wars on bodies and legal protocols while examining the gap between emotional intention and physical execution.

TOUR COORDINATOR

Michelle Ellsworth
michelle.ellsworth@colorado.edu
tel 720.771.3380

ARTIST FEE

\$8,000/performance
\$13,000/week
(Plus housing)

TOURING AVAILABILITY

September 2014–February 2017

TECH NEEDS

Contact tour coordinator for details.

PRESENTER PARTNERS

On the Boards (Seattle, WA)
The Chocolate Factory
(Long Island City, NY)
Real Art Ways (Hartford, CT)

PHOTO: JUAN CARLOS SALVATIERRA

PAT GRANEY COMPANY

Seattle, WA
www.patgraney.org



girl gods

girl gods explores the ancestry of women, individuals, and family members—and the idea of rage. Although a separate and complete work on its own, *girl gods* can be described as part two of Graney's 2008 *House of Mind*, with the choreographer exploring the point at which the domestic realm drives down into the earth. The work includes a strong sculptural component and is heavily influenced by feminist artists and art practices of the 1970s.

TOUR COORDINATOR

Pat Graney, Executive/Artistic Director
Pat Graney Company
patgraney@earthlink.net
tel 206.329.3705

ARTIST FEE

\$27,000/performance
\$40,000/week

TOURING AVAILABILITY

November 2015–June 2016

TECH NEEDS

Contact tour coordinator for details.

PRESENTER PARTNERS

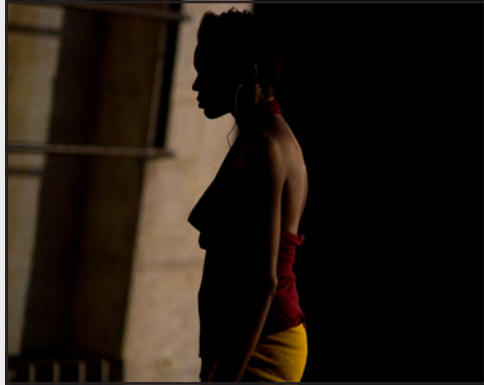
On the Boards (Seattle, WA)
New York Live Arts (New York, NY)
Contemporary Dance Theater
(Cincinnati, OH)

PHOTO: JEFFREY MACHTIG

RALPH LEMON/CROSS PERFORMANCE

New York, NY

www.mappinternational.org

**Scaffold Room**

A lecture-performance-musical that refracts ideas of the modern vs. archetypal black female (performer) in American culture, *Scaffold Room* features three women (Okwui Okpokwasili and April Mathis live, with Edna Carter on video), accompanied by a live DJ, acting out against assumptions about prescribed body-politics while drawing on iconic characters from history, popular culture, and speculative fiction ranging from Moms Mabley to Amy Winehouse to Kathy Acker. Lemon's latest experiment with form and presentation, the scaffold room is a confined, constructed environment—a self-contained theater in which performance and visual media seamlessly merge.

TOUR COORDINATOR

Michelle Coe, Director of Booking
MAPP International Productions
michelle@mappinternational.org
tel 646.602.9390

ARTIST FEE

\$45,000/week
(Plus housing and local transportation)

TOURING AVAILABILITY

September 2014–June 2015

TECH NEEDS

Nontraditional spaces; contact tour coordinator for details.

PRESENTER PARTNERS

Walker Art Center (Minneapolis, MN)
EMPAC at Rensselaer (Troy, NY)

2012 NDP recipient available to tour in the 2014–2015 season.

PHOTO: DAN MERLO

RAGAMALA DANCE

Minneapolis, MN

www.ragamaladance.org

**Song of the Jasmine**

Song of the Jasmine is an evening-length work by choreographer Aparna Ramaswamy, with co-artistic director Raneer Ramaswamy and jazz saxophonist/composer Rudresh Mahanthappa. Rooted in their shared bicultural identity and how it has influenced their artistry in distinct ways, the artists take inspiration from the transformative poetry of medieval India to explore American identity, global citizenship, and the divine. Aparna, Raneer, and Rudresh lead an ensemble of five dancers and four musicians.

TOUR COORDINATOR

Laura Colby, Director
Elsie Management
laurac@elsiemanager.org
tel 718.797.4577
www.elsiemanager.org

ARTIST FEE

\$25,000/performance
\$45,000/week
(Plus housing)

TOURING AVAILABILITY

September 2014–August 2015

TECH NEEDS

Sprung floor; marley; prior day load-in, mics for instruments.

PRESENTER PARTNERS

Walker Art Center (Minneapolis, MN)
Clarice Smith Performing Arts Center
(College Park, MD)

PHOTO: ED BOCK

ROBERT MOSES' KIN

San Francisco, CA

www.robertmoseskin.org

**NEVABAWARLDAPECE****(never be a world of peace)**

NEVABAWARLDAPECE, created by Robert Moses with music and book by Carl Hancock Rux, composer Corey Harris, and vocalist Laura Love, is an uncompromising look at freedom and liberation movements. Aspirational in tone, this work draws inspiration from movements as varied as John Brown's fanaticism and the idealism of Occupy, addressing aspects of cultural transformation that have broad results. *NEVABAWARLDAPECE* looks at the contradictions of social change, from idealism to dispirited climax.

TOUR COORDINATOR

Mary Carbonara, Interim Executive Director
Robert Moses' Kin
marycarb@robertmoseskin.org
robertmoseskin@gmail.com
tel 415.845.4933

ARTIST FEE

\$18,000/performance
\$30,000/week
(Additional fees for live music)

TOURING AVAILABILITY

June 2014–August 2015

TECH NEEDS

Contact tour coordinator for details.

PRESENTER PARTNERS

Contemporary Dance Theater
(Cincinnati, OH)
Bates Dance Festival (Lewiston, ME)

2012 NDP recipient available to tour in the 2014–2015 season.

PHOTO: R J MUNA

ROSY SIMAS DANSE

Minneapolis, MN
www.rosysimas.com



We Wait In The Darkness

We Wait In The Darkness is a solo dance by Native American contemporary choreographer Rosy Simas (Seneca) that explores how ancestry, homeland, culture, and history are stored in the body and expressed in movement. In collaboration with photographer/filmmaker Douglas Beasley and French composer François Richomme, Simas creates an otherworldly environment of images, sound, and movement. Using personal metaphor and story, the work takes the audience on a journey through a contemplative and fierce Native experience of displacement and homecoming.

TOUR COORDINATOR

Rosy Simas, Director
Rosy Simas Danse
dance@rosysimas.com
tel 612.719.9605

ARTIST FEE

\$4,000-\$6,000/performance
\$8,000-\$10,000/week

TOURING AVAILABILITY

July 2014-August 2015

TECH NEEDS

Contact tour coordinator for details.

PRESENTER PARTNERS

Red Eye Collaboration (Minneapolis, MN)
Oneida Nation Arts Program
(Green Bay, WI)
Culver Center (Riverside, CA)
MAI, Montréal Arts Intercultural
(Montréal, QC)

PHOTO: DOUGLAS BEASLEY

SARAH MICHELSON

New York, NY



Devotion Study #3 & Study #4

The final installments of choreographer Sarah Michelson's *Devotion* series, *Devotion Study #3 & Study #4* continue the artist's rigorous investigation into the possibility of locating and isolating the desire to dance. The new work aims to make clear the ferocity of the artist's and the dancers' devotion to dancing. With visual design by Sarah Michelson, music by Mike Iveson, and lighting design by Zack Tinkelman, the works will be created concurrently and tour together or individually after premieres in early 2014 at the Whitney Museum and Judson Church.

TOUR COORDINATOR

Barbara Bryan, Producing Director
Sarah Michelson Inc.
smichelsoninc@gmail.com
tel 646.691.0010

ARTIST FEE

\$15,000/performance
\$35,000/week

TOURING AVAILABILITY

September 2015-August 2016

TECH NEEDS

Contact tour coordinator for details.

PRESENTER PARTNERS

Walker Art Center (Minneapolis, MN)
The Whitney Museum (New York, NY)

PHOTO: SARAH MICHELSON

SEAN DORSEY DANCE

San Francisco, CA
www.seandorseydance.com



The Missing Generation and The Source Of Joy

The Missing Generation and The Source Of Joy explores the contemporary impact of losing much of a generation of gay and transgender people to AIDS during the 1980s. Created through a national LGBT Inter-Generational Oral History Project, extensive archival research, and community residencies in six U.S. cities, the work features full-throttle dance, highly-physical theater, luscious partnering, and intimate storytelling. A powerful original score features the voices and remarkable real-life stories of lovers, survivors, and early AIDS activists.

TOUR COORDINATOR

Sean Dorsey, Artistic Director
Sean Dorsey Dance
sean@seandorseydance.com
tel 415.355.0071

ARTIST FEE

\$12,000-\$15,000/performance
\$15,000-\$20,000/week
(Plus housing and travel)

TOURING AVAILABILITY

April 2015-December 2016

TECH NEEDS

Contact tour coordinator for details.

PRESENTER PARTNERS

Dance Place (Washington, DC)
Bates Dance Festival (Lewiston, ME)
Queer Cultural Center (San Francisco, CA)
Florida Dance Festival (Tampa, FL)
7 Stages (Atlanta, GA)

PHOTO: LYDIA DANILLER

SOLEDAD BARRIO & NOCHE FLAMENCA

New York, NY

www.nocheflamenca.com**Antigona**

An evening-length theatrical flamenco interpretation of the text and themes in Sophocles' classic tragedy, *Antigona* is a work developed for the company by artistic director/choreographer Martin Santangelo in collaboration with composer Antonio Rodriguez, principal dancer Soledad Barrio, co-director Lee Breuer (Mabou Mines), and visual artist Mary Frank (set, costume, and mask design). Rodriguez's score mixes original contemporary and ancient musical forms in this piece developed in partnership with California State University Monterey Bay/World Theater.

TOUR COORDINATOR

Margaret Selby, President
CAMI Spectrum
mselby@cami.com
tel 212.841.9554
www.cami.com

ARTIST FEE

\$35,000/performance
\$60,000/week

TOURING AVAILABILITY

June 2014–December 2018

TECH NEEDS

Contact tour coordinator for details.

PRESENTER PARTNERS

California State University Monterey Bay/
World Theater (Seaside, CA)
Jacob's Pillow Dance Festival (Becket, MA)
The Joyce Theater (New York, NY)

PHOTO: ANDRES DELIA

**VOLOSHKY UKRAINIAN
DANCE ENSEMBLE**

Philadelphia, PA

www.voloshky.com**STEPPE: A Crossover**

This full-length program created by artistic director Taras Lewyckyj and choreographers Anatolij Kryvochyzha and Andrew Pap takes audiences on an exciting journey from traditional Ukrainian to contemporary dance. Featuring over 35 dancers and musicians, the program underscores America's unique pluralistic heritage. Audiences experience the bold acrobatics of Ukrainian dance and ingenious artistry of the company set in motion by a live, virtuosic orchestra. The program includes a work by Mark Morris commissioned to mark Voloshky's 40th season.

TOUR COORDINATOR

Linda Reznik, Artist Manager
River City Artists Management
lreznik@rivercityartists.com
tel 412.335.5293
www.rivercityartists.com

ARTIST FEE

\$27,000/performance
\$75,000/week
(Plus housing and travel)

TOURING AVAILABILITY

July 2014–August 2015

TECH NEEDS

Contact tour coordinator for details.

PRESENTER PARTNERS

Bryn Mawr College (Bryn Mawr, PA)
University of the Arts (Philadelphia, PA)
Ukrainian Educational and Cultural Center
(Jenkintown, PA)

2012 NDP recipient available to tour in the 2014-2015 season.

PHOTO: ANDREW ZWARYCH

Additional projects
eligible for NDP
touring support will
be announced in
December 2013!

**For complete guidelines,
application information,
and more, visit nefa.org.**

VIDEO SAMPLES

To see excerpts of work by the artists and companies currently eligible for NDP touring support, visit the National Dance Project page at nefa.org.



PHOTO OF NDP GRANT RECIPIENT:
KATE WEARE DANCE COMPANY
PHOTO: ARTHUR FINK

NDP FUNDING OPPORTUNITIES

NDP Production Grants make possible the creation of new work and initiate a cycle of support for presenters to access funding through Presentation Grants.

FOR ARTISTS

NDP PRODUCTION GRANTS

WHO MAY APPLY

Choreographers and companies.

GRANT RECIPIENTS

Grants are made to artists with nonprofit status or to a nonprofit fiscal sponsor on behalf of an artist.

NEXT DEADLINE

March 3, 2014

Production Grants fund the development of new dance work that will tour nationally. Grants range from \$25,000 to \$40,000 and support the creation of the work.

Production Grant recipients automatically receive an NDP Touring Award, allowing U.S. nonprofit organizations presenting the new work to apply for funds that subsidize up to 50% of the artist fee and travel expenses.

(See NDP Presentation Grants on page 13.)

NDP TOURING AWARDS

WHO MAY APPLY

Choreographers and companies. Agents, artist managers, and presenters may also apply on behalf of an artist, company, or project.

GRANT RECIPIENTS

Touring Awards are disbursed to U.S. nonprofit organizations as Presentation Grants.

NEXT DEADLINE

October 7, 2013

NDP Touring Awards support U.S. tours of projects that receive NDP Production Grants as well as U.S. tours of projects created independently of NDP Production support.

Touring Award funds of up to \$35,000 for each project are distributed as Presentation Grants to nonprofit organizations presenting the project on tour to subsidize artist fees and travel expenses.

(See NDP Presentation Grants on page 13.)

FOR PRESENTERS

NDP PRESENTATION GRANTS

WHO MAY APPLY

U.S. nonprofit organizations presenting a funded project between June 2014 and August 2015.

GRANT RECIPIENTS

Grants are made to U.S. nonprofit organizations to subsidize up to 50% of the artist fee and travel expenses per engagement.

NEXT DEADLINES

March 10, 2014 (project tour plans due)

April 14, 2014 (presenter funding requests due, by invitation only)

To present any of the projects listed on pages 3–10 during their NDP touring seasons, eligible organizations should contact tour coordinators well before the March 10, 2014 tour plan deadline. NEFA will contact organizations included in the tour plans with application instructions for NDP Presentation Grants.

Additional projects eligible for NDP touring support will be announced in December 2013.

FUSED (FRENCH-U.S. EXCHANGE IN DANCE)

WHO MAY APPLY

U.S. nonprofit organizations who are presenting and/or hosting residencies for French artists.

GRANT RECIPIENTS

Grants are made to U.S. nonprofit organizations to support up to 50% of the artist fee and travel expenses per engagement.

NEXT DEADLINE

February 10, 2014

FUSED grants support residencies and/or presentations for U.S. and French artists that take place in the partner country.

FUSED is an ongoing international partnership between NEFA and the Cultural Services of the French Embassy in the United States in collaboration with the French American Cultural Exchange (FACE).

U.S. presenters hosting French artists apply through NEFA. French presenters hosting U.S. artists apply through FACE (facecouncil.org).

ADDITIONAL NDP PROGRAMS

» Production Residencies for Dance (PRD)

Enhancing partnerships between artists and residency sites to prepare new works for touring.

» RDDI (Regional Dance Development Initiative)

Providing professional growth for artists in regions across the U.S.

» Contemporary Art Centers (CAC) network

Promoting projects that model innovative multi- and cross-disciplinary collaborations.

**For complete guidelines,
application information,
and more, visit nefa.org.**



NATIONAL DANCE PROJECT ADDITIONAL TOURING AWARDS

DECEMBER 2013

LEAD FUNDERS

Doris Duke Charitable Foundation
The Andrew W. Mellon Foundation

ADDITIONAL FUNDERS

MetLife Foundation
National Endowment for the Arts
Cultural Services of the French Embassy
French American Cultural Exchange

**THESE PROJECTS ARE ELIGIBLE FOR
PRESENTATION SUPPORT IN THE 2014-2015
SEASON, IN ADDITION TO THE PROJECTS
ANNOUNCED IN AUGUST 2013.**

CONTACT

SARA C. NASH

PROGRAM MANAGER, NDP
617.951.0010 X512
SNASH@NEFA.ORG

ELIZABETH EPSER

PROGRAM COORDINATOR, NDP
617.951.0010 X521
EEPSER@NEFA.ORG

CHERI OPPERMAN

GRANTS COORDINATOR, NDP
617.951.0010 X524
COPPERMAN@NEFA.ORG

JANE PRESTON

DIRECTOR OF PROGRAMS

REBECCA BLUNK

EXECUTIVE DIRECTOR

COMPAGNIE MARIE CHOUINARD

Montreal, QC, Canada
www.mariechouinard.com

**Gymnopédies**

This most recent piece by Marie Chouinard is based on Erik Satie's *Gymnopédies* (1888) and is created around the duet form, both loving and erotic in its expression. COMPAGNIE dancers push their limits by taking turns playing Erik Satie's iconic piece of music live on the piano. One reviewer wrote, "With everything reduced to such inspired essentials, the evening rose to the highest form of art, propelled by a choreographer operating at her creative peak, where we could truly expect the unexpected."

TOUR COORDINATOR

Cathy Pruzan, Artist Representative
cpruzan@aol.com
 tel 415.789.5051
www.cathypruzan.com

ARTIST FEE

\$25,000/performance
 \$50,000/week

TOURING AVAILABILITY

June 2014–August 2015

TECH NEEDS

One full day of load-in prior to performance; grey marley floor.

PRESENTER PARTNERS

Alverno Presents (Milwaukee, WI)
 University of Michigan (Ann Arbor, MI)

PHOTO: SYLVIE-ANN PARÉ

DORRANCE DANCE

New York, NY
www.dorrancedance.com

**The Blues Project**

The Blues Project features nine dancers and five musicians in an evening-length work. Through group tap choreography and virtuoso solos, *The Blues Project* tells individual stories and sentiments about being and feeling 'blue'. Each tale is supremely connected through the originally composed blues music of Toshi Reagon.

TOUR COORDINATOR

Angela Luem, Artist Representative
 Pentacle
angelal@pentacle
 tel 347.854.3010
www.pentacle.org

ARTIST FEE

\$31,000/performance
 \$40,000/week

TOURING AVAILABILITY

June 2014–August 2015

TECH NEEDS

A floor suitable for tap dancing is necessary. If no tap floor is available, the company can provide one or can provide contacts for a local rental. Fees apply.

PRESENTER PARTNERS

Carolina Performing Arts (Chapel Hill, NC)
 Spoleto Festival USA (Charleston, SC)
 The Broad Stage (Santa Monica, CA)

PHOTO: MATTHEW MURPHY AND KENN TAM

EMILY JOHNSON/CATALYST

Minneapolis, MN
www.catalystdance.com

**SHORE**

SHORE is the third in a trilogy of works that began with *The Thank-you Bar* and continued with *Niicugni*. *SHORE* will be a multi-day performance installation of dance, story, volunteerism, and feasting. It will be a celebration of the places where we meet and merge - land and water, performer and audience, art and community. Over a week, *SHORE* includes volunteer actions in partnership with community organizations, a curated reading featuring local authors, and performances that move from outdoors onto stage, culminating in a festive potluck/feast.

TOUR COORDINATOR

Meredith L. Boggia
meredith.boggia@gmail.com
 tel 518.791.0376

ARTIST FEE

\$30,000–\$40,000/week
 (Plus travel and housing)

TOURING AVAILABILITY

June 2014–August 2015

TECH NEEDS

Flexible per partner; please contact tour coordinator for details.

PRESENTER PARTNERS

New York Live Arts (New York, NY)
 On the Boards (Seattle, WA)

PHOTO: CAMERON WITTIG

H.T. CHEN & DANCERS

New York, NY

www.ChenDanceCenter.org



South of Gold Mountain

South of Gold Mountain is a new work by H.T. Chen based on stories from Chinese people in the American South. These hidden stories were revealed during research trips by H.T. Chen to Georgia, Mississippi, and Tennessee in 2012 to conduct oral histories with those who settled in the southern states before WWII. Collaborators will include a Jazz/Blues composer from Mississippi, a Chinese American lyricist, video footage of oral histories, historic photographs, and a multi-generational cast from New York and the southern states.

TOUR COORDINATOR

Francine Sheffield, Artist Representative
Pentacle
francines@pentacle.org
tel 212.278.8111 x305
www.pentacle.org/metro_ht_chen_dancers.php

ARTIST FEE

\$18,000/performance
\$28,000/week
(Plus housing and local travel)

TOURING AVAILABILITY

October 2014–August 2015

TECH NEEDS

Contact tour coordinator for details.

PRESENTER PARTNERS

Alternate ROOTS (Atlanta, GA)
La Mama (New York, NY)
'62 Center for Theater and Dance
(Williamstown, MA)

PHOTO: VICTORIA SENDRA

PANAIBRA GABRIEL CANDA & FAUSTIN LINYEKULA

Mozambique/D.R. Congo

www.mappinternational.org



Look Back, Dance Forward: TALES OF HOME | Congo/Mozambique

This two-evening program features Faustin Linyekula (Congo) in his acclaimed solo, *Le Cargo*, and Panaibra Gabriel Canda (Mozambique) in his expressive duet *Time & Spaces: The Marrabenta Solos*, with live music performed by guitarist Jorge Domingos. In both pieces, the artists grapple with the complex histories of their countries by re-igniting memories of and experiences with their fathers. In the process, they reveal the rigor and passions of their contemporary lives.

TOUR COORDINATOR

Michelle Coe, Director of Booking
MAPP International Productions
michelle@mappinternational.org
tel 646.602.9390
www.mappinternational.org

ARTIST FEE

\$19,000/performance
\$26,000/week
(Plus housing and local travel)

TOURING AVAILABILITY

October 2014–December 2014

TECH NEEDS

No special requirements; standard lighting and sound; video projector for subtitles.

PRESENTER PARTNERS

New York Live Arts (New York, NY)
The Ringling Museum of Art (Sarasota, FL)
Clarice Smith Performing Arts Center
(College Park, MD)

PHOTO: (LEFT) AGATHE POUPENEY; (RIGHT) ARTHUR FINK

ROSAS

Brussels, Belgium

www.rosas.be



Rosas danst Rosas

Created in 1983 for four very powerful and committed female performers, *Rosas danst Rosas* is a seminal work of art which led to the founding of Anne Teresa De Keersmaecker's company ROSAS and much international acclaim. The restaging of this work provides a unique opportunity for today's audiences to experience a landmark moment in the history of contemporary performance. *Rosas danst Rosas* is a piece for four dancers and consists of five chapters full of intense physical energy with music by Thierry De Mey and Peter Vermeersch.

TOUR COORDINATOR

Inge Pieters, Executive Director
Rosas
Inge.Pieters@rosas.be
tel 0032 2344 55 98
www.rosas.be

ARTIST FEE

\$14,615/performance
\$38,750/week

TOURING AVAILABILITY

June 2014–August 2015

TECH NEEDS

Contact tour coordinator for details.

PRESENTER PARTNERS

FringeArts (Philadelphia, PA)
Walker Art Center (Minneapolis, MN)
Museum of Contemporary Art Chicago
(Chicago, IL)

PHOTO: HERMAN SORGELOOS

SHANTALA SHIVALINGAPPA

Paris, France
www.shantashivalingappa.com

**AKASHA**

Shantala Shivalingappa, longtime collaborator of luminaries Pina Bausch, Sidi Larbi Cherkaoui, and Peter Brook, masterfully blends Kuchipudi with Western dance aesthetics that deeply resonate with today's audiences. "[AKASHA] is remarkable: the lines and bends of Ms. Shivalingappa's slender figure, the transporting sounds from the singer, flutist and two percussionists. 'Akasha' means 'space,' and the space she puts around rhythms clarifies them, just as her physical precision clarifies her shapes," Brian Seibert, *The New York Times*.

TOUR COORDINATOR

David Persky
 Director of Business Development
 Sunny Artist Management
david@sunnyartistmanagement.com
 tel 646.202.1035
www.sunnyartistmanagement.com

ARTIST FEE

\$20,000/performance
 \$45,000/week

TOURING AVAILABILITY

June 2014–August 2015

TECH NEEDS

A low platform for musicians and a sound system for live music. For additional details, please contact our tour coordinator.

PRESENTER PARTNERS

Institute of Contemporary Art
 (Boston, MA)
 Carolina Performing Arts (Chapel Hill, NC)
 '62 Center for Theater and Dance
 (Williamstown, MA)

PHOTO: ELIAN BACHINI

TAHNI HOLT

Portland, OR
www.tahniholt.com

**DUET LOVE**

DUET LOVE plays with our precious notions of hetero-romance by examining the desire for stability, recognition, and narrative structure of two bodies on stage. Choreographer Tahni Holt and her team of four dancers use iconic images of famous couples as the driving force to disrupt and question how gendered bodies are portrayed in images and in performance. *DUET LOVE* thrives upon queer twists of man-woman love by asking: how does audience desire inflect masculine and feminine into the movement and emotion of dancing bodies?

TOUR COORDINATOR

Tahni Holt, Choreographer
hello@tahniholt.com
 tel 503.708.5801
www.tahniholt.com

ARTIST FEE

\$15,000/week

TOURING AVAILABILITY

August 2014–December 2015

TECH NEEDS

Contact tour coordinator for details.

PRESENTER PARTNERS

Portland Institute for Contemporary Art
 (Portland, OR)
 Velocity Dance Center (Seattle, WA)
 The Lucky Penny (Atlanta, GA)

PHOTO: EUGENIE FRERICH (2012)

URBAN BUSH WOMEN

Brooklyn, NY
www.urbanbushwomen.org

***Walking with 'Trane: Chapter 2***

Part of a series of works by Jawole Willa Jo Zollar that plunge the depths of jazz musician John Coltrane's formidable legacy; *Walking with 'Trane: Chapter 2* is a music and movement journey inspired by the making of and music from Coltrane's 1965 album *A Love Supreme*.

TOUR COORDINATOR

Liz Harler, Artist Manager, Touring/Dance
 IMG Artist
lharter@imgartists.com
 tel 212.994.3552
www.imgartists.com

ARTIST FEE

\$25,000/performance
 \$57,500/week

TOURING AVAILABILITY

June 2014–August 2015

TECH NEEDS

One day of load-in prior to the performance day; white marley floor; one grand piano with bench; fog machine; three RFM microphones; and two hand-held microphones.

PRESENTER PARTNERS

Dance Center of Columbia College
 (Chicago, IL)
 Meany Hall for the Performing Arts
 (Seattle, WA)
 South Miami-Dade Cultural Arts Center
 (Miami, FL)

PHOTO: ANTOINE TEMPÉ

ZOE | JUNIPER

Seattle, WA

www.zoejuniper.org***BeginAgain***

BeginAgain, a dynamic combination of interweaving parallel solos for Zoe Scofield and former Batsheva and Crystal Pite dancer, Ariel Freedman. The work is the culmination of Zoe and Juniper Shuey's year-long research studying performance and installation constructs. Working with performance critic Jeremy Barker and presenters at each venue, Zoe and Juniper engage in a new creative process distilled into an ongoing blog, evening-length performance, and video performance installation.

TOUR COORDINATOR

Stefanie Karlin, Managing Director

zoe | juniper

stefanie@zoejuniper.orgzoe@zoejuniper.org

tel 847.609.3597

www.zoejuniper.org**ARTIST FEE**

\$8,500/performance

\$20,000/week

TOURING AVAILABILITY

June 2014–August 2015

TECH NEEDS

Contact tour coordinator for details.

PRESENTER PARTNERS

The Joyce Theater (New York City, NY)

Fusebox Festival (Austin, TX)

Contemporary Arts Center

(New Orleans, LA)

PHOTO: JUNIPER SHUEY

VIDEO SAMPLES

To see excerpts of work by the artists and companies currently eligible for NDP touring support, visit the National Dance Project page at nefa.org.



For complete guidelines,
application information,
and more, visit nefa.org.

NEFA is a nonprofit organization that operates with funding from the National Endowment for the Arts, the New England state arts agencies, and from corporations, foundations, and individuals.

To learn how you can support NEFA, visit nefa.org.

Connect with NEFA!



NEW ENGLAND FOUNDATION FOR THE ARTS

145 Tremont St.
Seventh Floor
Boston, MA 02111

www.nefa.org